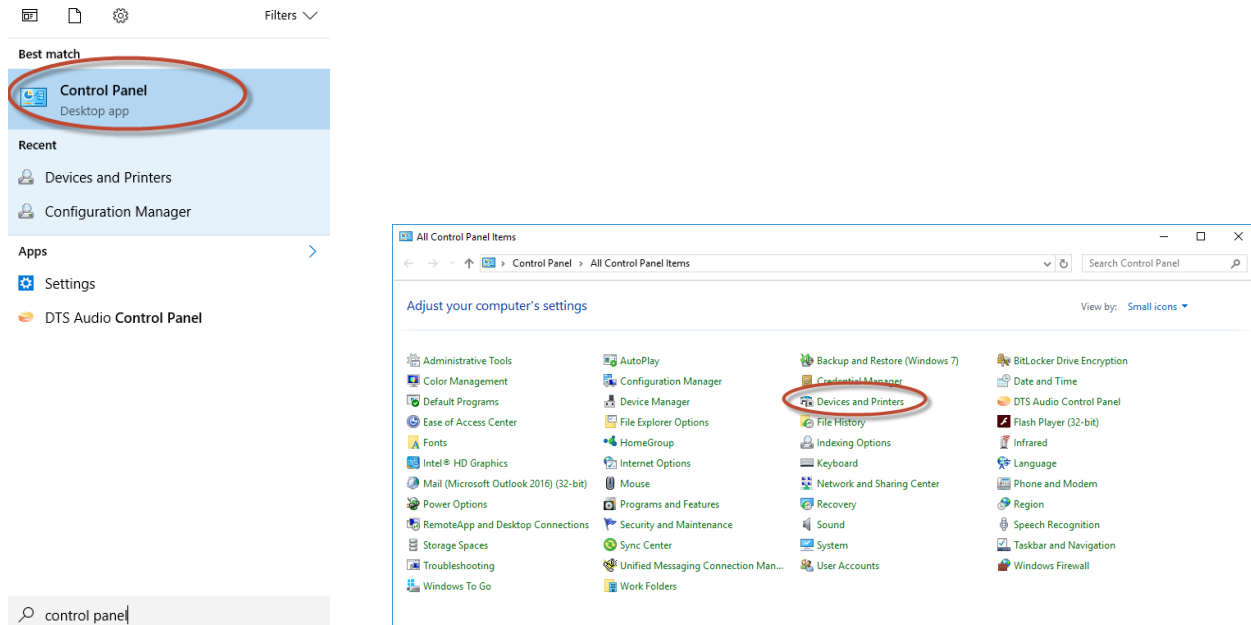
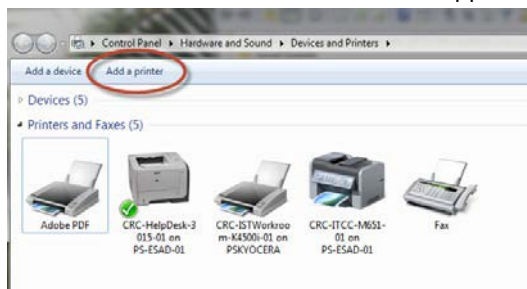


FROM WINDOWS 10:

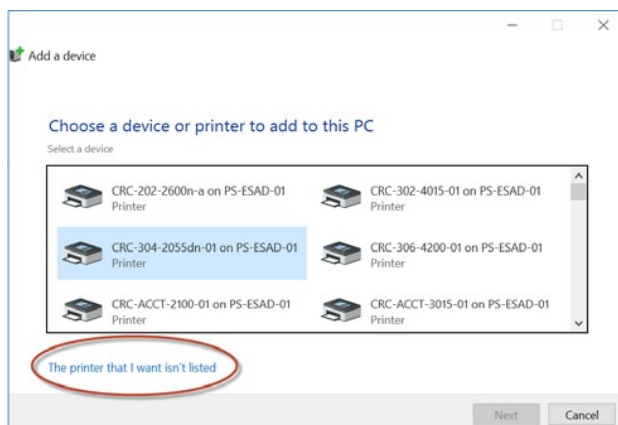
Click on the Start menu in the bottom left corner and in the field, type control. Click on Control Panel when it appears in the list, then click Devices and Printers



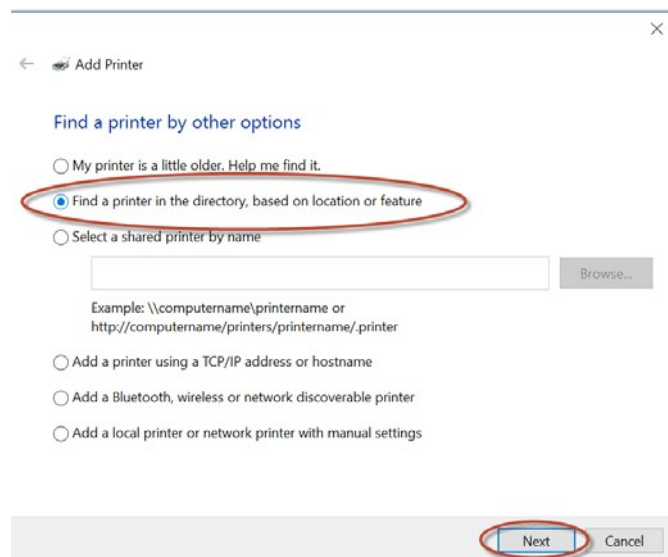
On the Devices and Printers screen that appears, click on Add a printer



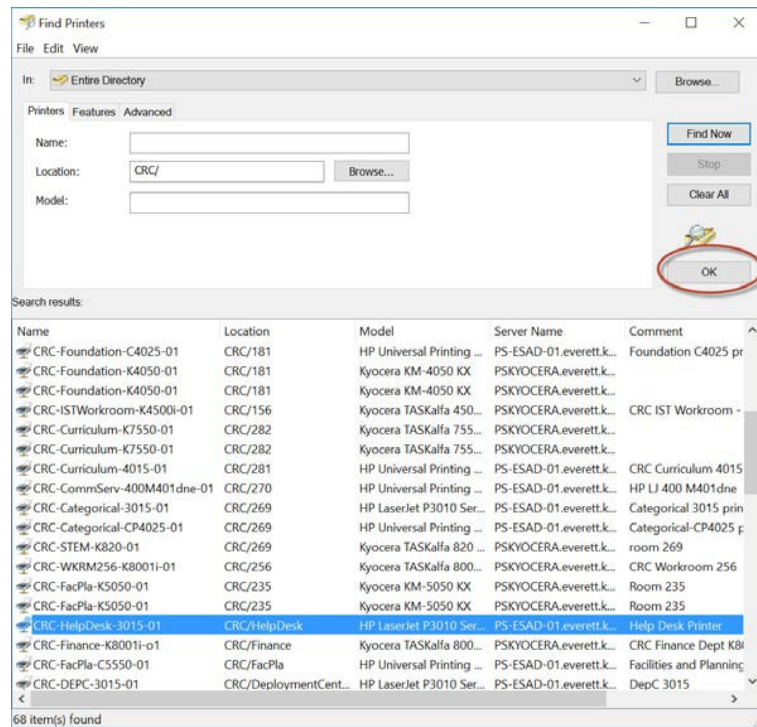
Choose “The printer that I want isn’t listed”



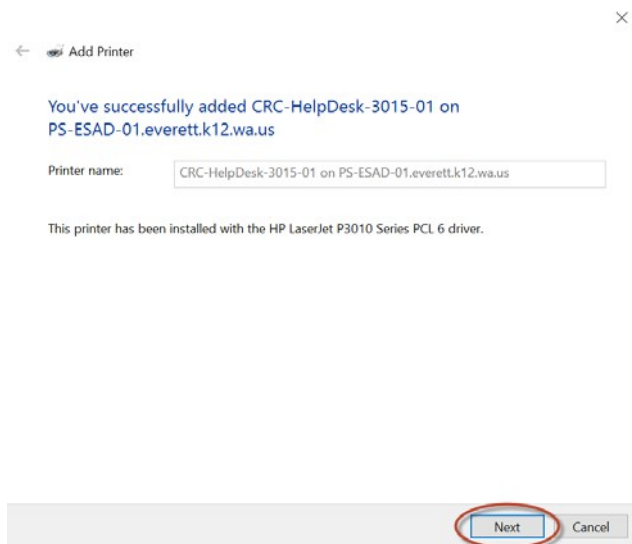
Click the option “Find a printer in the directory, based on location or feature” and click Next



Click the “Name” field to sort the printer list alphabetically. Then find the printer of your choosing, click on it and then select OK



It will begin downloading and installing the driver and then report that your printer was successfully added. Click Next



Your set up is now complete. If you wish, check the box to Set as the default printer. You can also choose to Print a test page to confirm it prints successfully. Once done, click Finish. You will now see your newly added printer in your Devices and Printers list.

